

TEST REPORT

Applicant: Flashbay Electronics
Address: Building2 ,Jixun Industrial Park ,Xinjiao ,Dong'ao Village ,Shatian Town ,Huiyang District ,Huizhou City , Guangdong Province,P.R.China

The following sample(s) was/were submitted and identified on behalf of the client as:

Sample name: Gadgets
Model: Swirla
Client Ref. Info.: Bliss
Trade mark: Flashbay
Manufacturer & Factory: Flashbay Electronics
Address: Building2 ,Jixun Industrial Park ,Xinjiao ,Dong'ao Village ,Shatian Town ,Huiyang District ,Huizhou City , Guangdong Province,P.R.China

Sample No.: S250630005012
Sample Received Date: 2025-07-04
Testing Period: 2025-07-04~ 2025-08-21

Test Requirement:

As specified by client, to determine the Lead(Pb), Cadmium(Cd), Mercury(Hg), Hexavalent Chromium (Cr(VI)), Polybrominated Biphenyls(PBBs), Polybrominated Diphenyl Ethers(PBDEs), Bis-(2-ethylhexyl) Phthalate (DEHP), Benzyl butyl Phthalate (BBP), Dibutyl Phthalate (DBP) and Diisobutyl Phthalate(DIBP)contents in the submitted sample(s) in accordance with RoHS Directive (EU) 2015/863 amending Annex II to Directive 2011/65/EU.

Conclusion

Pass

Test Result(s): Please refer to the following page(s);

Test Method: Please refer to the following page(s);

Compiled by: Riva. He Reviewed by: Adalyn. Shen.
Approved by: May Li Date: 2025-08-27

Sample Description:

Sample No.	Sample ID	Part name	Sample description
1	1	Shell	Black plastic shell with gray silk lettering(shell,black-swirla)
2	2		Black plastic button(shell,black-swirla)
3	3		Cupreous metal ring(shell,black/white-swirla)
4	4		Black foam glue(shell,black/white-swirla)
5	5		Black white plastic label(shell,black/white-swirla)
6	6	Fan	Transparent plastic fan blade with grease(fan,black/white-swirla)
7	7		Silver metal ring(fan,black/white-swirla)
8	8		Magnet core(fan,black/white-swirla)
9	9		Silver metal rod(fan,black/white-swirla)
10	10		Black rubber ring(fan,black/white-swirla)
11	11		White plastic sheet(fan,black/white-swirla)
12	12		Silver metal silicon steel sheet(rotor,black/white-swirla)
13	13		Gray plastic frame(rotor,black/white-swirla)
14	14		Coil(rotor,black/white-swirla)
15	15		Green PCB(fan PCB,black/white-swirla)
16	16		Tin solder(fan PCB,black/white-swirla)
17	17		SMD chip(fan PCB,black/white-swirla)
18	18		White plastic terminal(fan cable,black/white-swirla)
19	19		Silver metal pin(fan cable,black/white-swirla)
20	20	Red wire jacket(fan cable,black/white-swirla)	
21	21	Black wire jacket(fan cable,black/white-swirla)	
22	22	Silver metal wire core(fan cable,black/white-swirla)	
23	23	Motherboard PCB	Blue PCB(mainboard PCB,black/white-swirla)
24	24		Beige plastic(beige interface,black/white-swirla)
25	25		Silver metal pin(beige interface,black/white-swirla)
26	26		Silver metal shell(type-c interface,black/white-swirla)
27	27		Gray plastic(type-c interface,black/white-swirla)
28	28		Silver metal pin(type-c interface,black/white-swirla)
29	29		Magnet core(inductor,black/white-swirla)
30	30		Coil(inductor,black/white-swirla)
31	31		Silver metal shell(contact switch,black/white-swirla)
32	32		Golden metal button(contact switch,black/white-swirla)
33	33		Gray plastic(contact switch,black/white-swirla)
34	34		Silver metal shrapnel(contact switch,black/white-swirla)
35	35		SMD LED(SMD,black/white-swirla)
36	36		SMD resistor(SMD,black/white-swirla)
37	37		SMD chip(SMD,black/white-swirla)

38	38	Motherboard PCB	SMD capacitor(SMD,black/white-swirl)
39	39		SMD audion(SMD,black/white-swirl)
40	40		SMD diode(SMD,black/white-swirl)
41	41	Battery	Blue plastic jacket with printing(battery,black/white-swirl)
42	42		Purple plastic jacket with printing(battery,black/white-swirl)
43	43		Green adhesive paper(battery,black/white-swirl)
44	44		White plastic ring(battery,black/white-swirl)
45	45		White plastic terminal(battery cable,black/white-swirl)
46	46		Silver metal pin(battery cable,black/white-swirl)
47	47		Red wire jacket(battery cable,black/white-swirl)
48	48		Black wire jacket(battery cable,black/white-swirl)
49	49		Silver metal wire core(battery cable,black/white-swirl)
50	50	White difference	White plastic shell with black silk lettering(difference shell,white-swirl)
51	51		White plastic button(difference shell,white-swirl)
52	52	Data cable	White encapsulation(USB interface,black/white-swirl)
53	53		Silver metal shell(USB interface,black/white-swirl)
54	54		White plastic(USB interface,black/white-swirl)
55	55		Silver metal pin(USB interface,black/white-swirl)
56	56		White encapsulation(type-c interface,black/white-swirl)
57	57		Silver metal shell(type-c interface,black/white-swirl)
58	58		Gray plastic(type-c interface,black/white-swirl)
59	59		Golden metal pin(type-c interface,black/white-swirl)
60	60		Green PCB(type-c interface,black/white-swirl)
61	61		Tin solder(type-c interface,black/white-swirl)
62	62		White exterior wire jacket(wire,black/white-swirl)
63	63		Red wire jacket(wire,black/white-swirl)
64	64		Black wire jacket(wire,black/white-swirl)
65	65		Cupreous metal wire core(wire,black/white-swirl)
66	67		Black difference
67	68	Black plastic shell with gray silk lettering(shell,black-bliss)	
68	69	Black foam glue(shell,black/white-bliss)	
69	70	Black rubber pads with glue(shell,black-bliss)	
70	71	Black plastic button(shell,black-bliss)	
71	72	Translucent rubber ring(shell,black/white-bliss)	
72	73	Silver metal screw(shell,black/white-bliss)	
73	74	Translucent plastic fan blade with grease(fan,black/white-bliss)	
74	75	Silver metal ring(fan,black/white-bliss)	

75	76	Black difference	Magnet core(fan,black/white-bliss)	
76	77		Silver metal rod(fan,black/white-bliss)	
77	78		White plastic sheet(fan,black/white-bliss)	
78	79		Black rubber ring(fan,black/white-bliss)	
79	80		Silver metal silicon steel sheet(rotor,black/white-bliss)	
80	81		Black plastic frame(rotor,black/white-bliss)	
81	82		Coil(rotor,black/white-bliss)	
82	83		Cupreous metal ring(rotor,black/white-bliss)	
83	84		Green PCB(fan PCB,black/white-bliss)	
84	85A		Tin solder(fan PCB,black/white-bliss)	
85	86		SMD chip(fan PCB,black/white-bliss)	
86	87		White plastic terminal(fan cable,black/white-bliss)	
87	88		Silver metal pin(fan cable,black/white-bliss)	
88	89		Red wire jacket(fan cable,black/white-bliss)	
89	90		Black wire jacket(fan cable,black/white-bliss)	
90	91		Silver metal wire core(fan cable,black/white-bliss)	
91	92		Black difference motherboard PCB	Green PCB(mainboard PCB,black/white-bliss)
92	93			Silver metal shell(type-c interface,black/white-bliss)
93	94			Gray plastic(type-c interface,black/white-bliss)
94	95			Silver metal pin(type-c interface,black/white-bliss)
95	96	Beige plastic(beige interface,black/white-bliss)		
96	97	Silver metal pin(beige interface,black/white-bliss)		
97	98	Magnet core(inductor,black/white-bliss)		
98	99	Coil(inductor,black/white-bliss)		
99	100	Silver metal shell(contact switch,black/white-bliss)		
100	101	Black plastic button(contact switch,black/white-bliss)		
101	102	Black plastic(contact switch,black/white-bliss)		
102	103	Silver metal shrapnel(contact switch,black/white-bliss)		
103	104	U2 SMD chip(SMD,black/white-bliss)		
104	105	C6 SMD capacitor(SMD,black/white-bliss)		
105	106	SMD audion(SMD,black/white-bliss)		
106	107	SMD diode(SMD,black/white-bliss)		
107	108	U1 SMD chip(SMD,black/white-bliss)		
108	109	White difference		White plastic shell(shell,white-bliss)
109	110		White plastic shell with black silk lettering(shell,white-bliss)	
110	111		White plastic button(shell,white-bliss)	
111	112		White rubber pad with glue(shell,white-bliss)	
112	113	Battery	Blue plastic jacket with printing(battery,black/white-bliss)	
113	114		Green adhesive paper(battery,black/white-bliss)	

114	115	Battery	Dark blue plastic jacket with printing(battery,black/white-bliss)	
115	116		White translucent plastic ring(battery,black/white-bliss)	
116	117		Green PCB(battery PCB,black/white-bliss)	
117	118		SMD chip-large(battery PCB,black/white-bliss)	
118	119		SMD chip-small(battery PCB,black/white-bliss)	
119	120		Silver metal sheet(battery PCB,black/white-bliss)	
120	121		Tin solder(battery PCB,black/white-bliss)	
121	122		White plastic terminal(battery cable,black/white-bliss)	
122	123		Silver metal pin(battery cable,black/white-bliss)	
123	124		Black wire jacket(battery cable,black/white-bliss)	
124	125		Red wire jacket(battery cable,black/white-bliss)	
125	126		Silver metal wire core(battery cable,black/white-bliss)	
126	127		Difference data lines	White encapsulation(USB interface,black/white-bliss)
127	128			Silver metal shell(USB interface,black/white-bliss)
128	129			White plastic(USB interface,black/white-bliss)
129	130	Silver metal pin(USB interface,black/white-bliss)		
130	131	White encapsulation(type-c interface,black/white-bliss)		
131	132	Silver metal shell(type-c interface,black/white-bliss)		
132	133	Gray plastic(type-c interface,black/white-bliss)		
133	134	Silver metal pin(type-c interface,black/white-bliss)		
134	135	Green PCB(type-c interface,black/white-bliss)		
135	136	Tin solder(type-c interface,black/white-bliss)		
136	137	White exterior wire jacket(wire,black/white-bliss)		
137	138	Red wire jacket(wire,black/white-bliss)		
138	139	Black wire jacket(wire,black/white-bliss)		
139	140	Cupreous metal wire core(wire,black/white-bliss)		

Test Result(s):
Lead(Pb), Cadmium(Cd), Mercury(Hg), Hexavalent Chromium (Cr(VI)), Polybrominated Biphenyls (PBBs), Polybrominated Diphenyl Ethers(PBDEs)

No.	Tested Item(s)		XRF Screening Result(mg/kg)	Chemical Test Result(mg/kg)	Conclusion	
1	Pb		BL	/	Pass	
	Cd		BL	/		
	Hg		BL	/		
	Cr	Cr(VI)	BL	/		
	Br	PBBs		BL		/
		PBDEs				/

2	Pb		BL	/	Pass
	Cd		BL	/	
	Hg		BL	/	
	Cr	Cr(VI)	BL	/	
	Br	PBBs	BL	/	
PBDEs		/			
3	Pb		BL	/	Pass
	Cd		BL	/	
	Hg		BL	/	
	Cr	Cr(VI)	BL	/	
	Br	PBBs	/	/	
PBDEs		/			
4	Pb		BL	/	Pass
	Cd		BL	/	
	Hg		BL	/	
	Cr	Cr(VI)	BL	/	
	Br	PBBs	BL	/	
PBDEs		/			
5	Pb		BL	/	Pass
	Cd		BL	/	
	Hg		BL	/	
	Cr	Cr(VI)	BL	/	
	Br	PBBs	BL	/	
PBDEs		/			
6	Pb		BL	/	Pass
	Cd		BL	/	
	Hg		BL	/	
	Cr	Cr(VI)	BL	/	
	Br	PBBs	BL	/	
PBDEs		/			
7	Pb		BL	/	Pass
	Cd		BL	/	
	Hg		BL	/	
	Cr	Cr(VI)	BL	/	
	Br	PBBs	/	/	
PBDEs		/			
8	Pb		BL	/	Pass
	Cd		BL	/	
	Hg		BL	/	
	Cr	Cr(VI)	BL	/	
	Br	PBBs	/	/	
PBDEs		/			

9	Pb		BL	/	Pass
	Cd		BL	/	
	Hg		BL	/	
	Cr	Cr(VI)	IN	N.D.	
	Br	PBBs	/	/	
PBDEs		/			
10	Pb		BL	/	Pass
	Cd		BL	/	
	Hg		BL	/	
	Cr	Cr(VI)	BL	/	
	Br	PBBs	BL	/	
PBDEs		/			
11	Pb		BL	/	Pass
	Cd		BL	/	
	Hg		BL	/	
	Cr	Cr(VI)	BL	/	
	Br	PBBs	BL	/	
PBDEs		/			
12	Pb		BL	/	Pass
	Cd		BL	/	
	Hg		BL	/	
	Cr	Cr(VI)	IN	N.D.	
	Br	PBBs	/	/	
PBDEs		/			
13	Pb		BL	/	Pass
	Cd		BL	/	
	Hg		BL	/	
	Cr	Cr(VI)	BL	/	
	Br	PBBs	BL	/	
PBDEs		/			
14	Pb		BL	/	Pass
	Cd		BL	/	
	Hg		BL	/	
	Cr	Cr(VI)	BL	/	
	Br	PBBs	/	/	
PBDEs		/			
15	Pb		BL	/	Pass
	Cd		BL	/	
	Hg		BL	/	
	Cr	Cr(VI)	BL	/	
	Br	PBBs	BL	/	
PBDEs		/			

16	Pb		BL	/	Pass
	Cd		BL	/	
	Hg		BL	/	
	Cr	Cr(VI)	BL	/	
	Br	PBBs	/	/	
PBDEs		/			
17	Pb		BL	/	Pass
	Cd		BL	/	
	Hg		BL	/	
	Cr	Cr(VI)	BL	/	
	Br	PBBs	BL	/	
PBDEs		/			
18	Pb		BL	/	Pass
	Cd		BL	/	
	Hg		BL	/	
	Cr	Cr(VI)	BL	/	
	Br	PBBs	BL	/	
PBDEs		/			
19	Pb		BL	/	Pass
	Cd		BL	/	
	Hg		BL	/	
	Cr	Cr(VI)	BL	/	
	Br	PBBs	/	/	
PBDEs		/			
20	Pb		BL	/	Pass
	Cd		BL	/	
	Hg		BL	/	
	Cr	Cr(VI)	BL	/	
	Br	PBBs	BL	/	
PBDEs		/			
21	Pb		BL	/	Pass
	Cd		BL	/	
	Hg		BL	/	
	Cr	Cr(VI)	BL	/	
	Br	PBBs	BL	/	
PBDEs		/			
22	Pb		BL	/	Pass
	Cd		BL	/	
	Hg		BL	/	
	Cr	Cr(VI)	BL	/	
	Br	PBBs	/	/	
PBDEs		/			

23	Pb		BL	/	Pass
	Cd		BL	/	
	Hg		BL	/	
	Cr	Cr(VI)	BL	/	
	Br	PBBs	BL	/	
PBDEs		/			
24	Pb		BL	/	Pass
	Cd		BL	/	
	Hg		BL	/	
	Cr	Cr(VI)	BL	/	
	Br	PBBs	BL	/	
PBDEs		/			
25	Pb		BL	/	Pass
	Cd		BL	/	
	Hg		BL	/	
	Cr	Cr(VI)	BL	/	
	Br	PBBs	/	/	
PBDEs		/			
26	Pb		BL	/	Pass
	Cd		BL	/	
	Hg		BL	/	
	Cr	Cr(VI)	IN	N.D.	
	Br	PBBs	/	/	
PBDEs		/			
27	Pb		BL	/	Pass
	Cd		BL	/	
	Hg		BL	/	
	Cr	Cr(VI)	BL	/	
	Br	PBBs	BL	/	
PBDEs		/			
28	Pb		BL	/	Pass
	Cd		BL	/	
	Hg		BL	/	
	Cr	Cr(VI)	BL	/	
	Br	PBBs	/	/	
PBDEs		/			
29	Pb		BL	/	Pass
	Cd		BL	/	
	Hg		BL	/	
	Cr	Cr(VI)	BL	/	
	Br	PBBs	/	/	
PBDEs		/			

30	Pb		BL	/	Pass
	Cd		BL	/	
	Hg		BL	/	
	Cr	Cr(VI)	BL	/	
	Br	PBBs	/	/	
		PBDEs		/	
31	Pb		BL	/	Pass
	Cd		BL	/	
	Hg		BL	/	
	Cr	Cr(VI)	IN	N.D.	
	Br	PBBs	/	/	
		PBDEs		/	
32	Pb		BL	/	Pass
	Cd		BL	/	
	Hg		BL	/	
	Cr	Cr(VI)	BL	/	
	Br	PBBs	/	/	
		PBDEs		/	
33	Pb		BL	/	Pass
	Cd		BL	/	
	Hg		BL	/	
	Cr	Cr(VI)	BL	/	
	Br	PBBs	BL	/	
		PBDEs		/	
34	Pb		BL	/	Pass
	Cd		BL	/	
	Hg		BL	/	
	Cr	Cr(VI)	IN	N.D.	
	Br	PBBs	/	/	
		PBDEs		/	
35	Pb		BL	/	Pass
	Cd		BL	/	
	Hg		BL	/	
	Cr	Cr(VI)	BL	/	
	Br	PBBs	BL	/	
		PBDEs		/	
36	Pb		OL	304	Pass
	Cd		BL	/	
	Hg		BL	/	
	Cr	Cr(VI)	BL	/	
	Br	PBBs	BL	/	
		PBDEs		/	

37	Pb		BL	/	Pass
	Cd		BL	/	
	Hg		BL	/	
	Cr	Cr(VI)	BL	/	
	Br	PBBs	BL	/	
PBDEs		/			
38	Pb		BL	/	Pass
	Cd		BL	/	
	Hg		BL	/	
	Cr	Cr(VI)	BL	/	
	Br	PBBs	BL	/	
PBDEs		/			
39	Pb		BL	/	Pass
	Cd		BL	/	
	Hg		BL	/	
	Cr	Cr(VI)	BL	/	
	Br	PBBs	BL	/	
PBDEs		/			
40	Pb		OL	2256 ^{#1}	Pass
	Cd		BL	/	
	Hg		BL	/	
	Cr	Cr(VI)	BL	/	
	Br	PBBs	BL	/	
PBDEs		/			
41	Pb		BL	/	Pass
	Cd		BL	/	
	Hg		BL	/	
	Cr	Cr(VI)	BL	/	
	Br	PBBs	BL	/	
PBDEs		/			
42	Pb		BL	/	Pass
	Cd		BL	/	
	Hg		BL	/	
	Cr	Cr(VI)	BL	/	
	Br	PBBs	BL	/	
PBDEs		/			
43	Pb		BL	/	Pass
	Cd		BL	/	
	Hg		BL	/	
	Cr	Cr(VI)	BL	/	
	Br	PBBs	BL	/	
PBDEs		/			

44	Pb		BL	/	Pass
	Cd		BL	/	
	Hg		BL	/	
	Cr	Cr(VI)	BL	/	
	Br	PBBs	BL	/	
PBDEs		/			
45	Pb		BL	/	Pass
	Cd		BL	/	
	Hg		BL	/	
	Cr	Cr(VI)	BL	/	
	Br	PBBs	BL	/	
PBDEs		/			
46	Pb		BL	/	Pass
	Cd		BL	/	
	Hg		BL	/	
	Cr	Cr(VI)	BL	/	
	Br	PBBs	/	/	
PBDEs		/			
47	Pb		BL	/	Pass
	Cd		BL	/	
	Hg		BL	/	
	Cr	Cr(VI)	BL	/	
	Br	PBBs	BL	/	
PBDEs		/			
48	Pb		BL	/	Pass
	Cd		BL	/	
	Hg		BL	/	
	Cr	Cr(VI)	BL	/	
	Br	PBBs	BL	/	
PBDEs		/			
49	Pb		BL	/	Pass
	Cd		BL	/	
	Hg		BL	/	
	Cr	Cr(VI)	BL	/	
	Br	PBBs	/	/	
PBDEs		/			
50	Pb		BL	/	Pass
	Cd		BL	/	
	Hg		BL	/	
	Cr	Cr(VI)	BL	/	
	Br	PBBs	BL	/	
PBDEs		/			

51	Pb		BL	/	Pass
	Cd		BL	/	
	Hg		BL	/	
	Cr	Cr(VI)	BL	/	
	Br	PBBs	BL	/	
PBDEs		/			
52	Pb		BL	/	Pass
	Cd		BL	/	
	Hg		BL	/	
	Cr	Cr(VI)	BL	/	
	Br	PBBs	BL	/	
PBDEs		/			
53	Pb		BL	/	Pass
	Cd		BL	/	
	Hg		BL	/	
	Cr	Cr(VI)	BL	/	
	Br	PBBs	/	/	
PBDEs		/			
54	Pb		BL	/	Pass
	Cd		BL	/	
	Hg		BL	/	
	Cr	Cr(VI)	BL	/	
	Br	PBBs	BL	/	
PBDEs		/			
55	Pb		BL	/	Pass
	Cd		BL	/	
	Hg		BL	/	
	Cr	Cr(VI)	BL	/	
	Br	PBBs	/	/	
PBDEs		/			
56	Pb		BL	/	Pass
	Cd		BL	/	
	Hg		BL	/	
	Cr	Cr(VI)	BL	/	
	Br	PBBs	BL	/	
PBDEs		/			
57	Pb		BL	/	Pass
	Cd		BL	/	
	Hg		BL	/	
	Cr	Cr(VI)	IN	N.D.	
	Br	PBBs	/	/	
PBDEs		/			

58	Pb		BL	/	Pass
	Cd		BL	/	
	Hg		BL	/	
	Cr	Cr(VI)	BL	/	
	Br	PBBs	BL	/	
PBDEs		/			
59	Pb		BL	/	Pass
	Cd		BL	/	
	Hg		BL	/	
	Cr	Cr(VI)	BL	/	
	Br	PBBs	/	/	
PBDEs		/			
60	Pb		BL	/	Pass
	Cd		BL	/	
	Hg		BL	/	
	Cr	Cr(VI)	BL	/	
	Br	PBBs	IN	N.D.	
PBDEs		N.D.			
61	Pb		BL	/	Pass
	Cd		BL	/	
	Hg		BL	/	
	Cr	Cr(VI)	BL	/	
	Br	PBBs	/	/	
PBDEs		/			
62	Pb		BL	/	Pass
	Cd		BL	/	
	Hg		BL	/	
	Cr	Cr(VI)	BL	/	
	Br	PBBs	BL	/	
PBDEs		/			
63	Pb		BL	/	Pass
	Cd		BL	/	
	Hg		BL	/	
	Cr	Cr(VI)	BL	/	
	Br	PBBs	BL	/	
PBDEs		/			
64	Pb		BL	/	Pass
	Cd		BL	/	
	Hg		BL	/	
	Cr	Cr(VI)	BL	/	
	Br	PBBs	BL	/	
PBDEs		/			

65	Pb		BL	/	Pass
	Cd		BL	/	
	Hg		BL	/	
	Cr	Cr(VI)	BL	/	
	Br	PBBs	/	/	
PBDEs		/			
66	Pb		BL	/	Pass
	Cd		BL	/	
	Hg		BL	/	
	Cr	Cr(VI)	BL	/	
	Br	PBBs	BL	/	
PBDEs		/			
67	Pb		BL	/	Pass
	Cd		BL	/	
	Hg		BL	/	
	Cr	Cr(VI)	BL	/	
	Br	PBBs	BL	/	
PBDEs		/			
68	Pb		BL	/	Pass
	Cd		BL	/	
	Hg		BL	/	
	Cr	Cr(VI)	BL	/	
	Br	PBBs	BL	/	
PBDEs		/			
69	Pb		BL	/	Pass
	Cd		BL	/	
	Hg		BL	/	
	Cr	Cr(VI)	BL	/	
	Br	PBBs	BL	/	
PBDEs		/			
70	Pb		BL	/	Pass
	Cd		BL	/	
	Hg		BL	/	
	Cr	Cr(VI)	BL	/	
	Br	PBBs	BL	/	
PBDEs		/			
71	Pb		BL	/	Pass
	Cd		BL	/	
	Hg		BL	/	
	Cr	Cr(VI)	BL	/	
	Br	PBBs	BL	/	
PBDEs		/			

72	Pb		BL	/	Pass
	Cd		BL	/	
	Hg		BL	/	
	Cr	Cr(VI)	BL	/	
	Br	PBBs	/	/	
PBDEs		/			
73	Pb		BL	/	Pass
	Cd		BL	/	
	Hg		BL	/	
	Cr	Cr(VI)	BL	/	
	Br	PBBs	BL	/	
PBDEs		/			
74	Pb		BL	/	Pass
	Cd		BL	/	
	Hg		BL	/	
	Cr	Cr(VI)	BL	/	
	Br	PBBs	/	/	
PBDEs		/			
75	Pb		BL	/	Pass
	Cd		BL	/	
	Hg		BL	/	
	Cr	Cr(VI)	BL	/	
	Br	PBBs	/	/	
PBDEs		/			
76	Pb		BL	/	Pass
	Cd		BL	/	
	Hg		BL	/	
	Cr	Cr(VI)	IN	N.D.	
	Br	PBBs	/	/	
PBDEs		/			
77	Pb		BL	/	Pass
	Cd		BL	/	
	Hg		BL	/	
	Cr	Cr(VI)	BL	/	
	Br	PBBs	BL	/	
PBDEs		/			
78	Pb		BL	/	Pass
	Cd		BL	/	
	Hg		BL	/	
	Cr	Cr(VI)	BL	/	
	Br	PBBs	BL	/	
PBDEs		/			

79	Pb		BL	/	Pass
	Cd		BL	/	
	Hg		BL	/	
	Cr	Cr(VI)	IN	N.D.	
	Br	PBBs	/	/	
PBDEs		/			
80	Pb		BL	/	Pass
	Cd		BL	/	
	Hg		BL	/	
	Cr	Cr(VI)	BL	/	
	Br	PBBs	BL	/	
PBDEs		/			
81	Pb		BL	/	Pass
	Cd		BL	/	
	Hg		BL	/	
	Cr	Cr(VI)	BL	/	
	Br	PBBs	/	/	
PBDEs		/			
82	Pb		BL	/	Pass
	Cd		BL	/	
	Hg		BL	/	
	Cr	Cr(VI)	BL	/	
	Br	PBBs	/	/	
PBDEs		/			
83	Pb		BL	/	Pass
	Cd		BL	/	
	Hg		BL	/	
	Cr	Cr(VI)	BL	/	
	Br	PBBs	BL	/	
PBDEs		/			
84	Pb		BL	/	Pass
	Cd		BL	/	
	Hg		BL	/	
	Cr	Cr(VI)	BL	/	
	Br	PBBs	/	/	
PBDEs		/			
85	Pb		BL	/	Pass
	Cd		BL	/	
	Hg		BL	/	
	Cr	Cr(VI)	BL	/	
	Br	PBBs	BL	/	
PBDEs		/			

86	Pb		BL	/	Pass
	Cd		BL	/	
	Hg		BL	/	
	Cr	Cr(VI)	BL	/	
	Br	PBBs	BL	/	
PBDEs		/			
87	Pb		BL	/	Pass
	Cd		BL	/	
	Hg		BL	/	
	Cr	Cr(VI)	BL	/	
	Br	PBBs	/	/	
PBDEs		/			
88	Pb		BL	/	Pass
	Cd		BL	/	
	Hg		BL	/	
	Cr	Cr(VI)	BL	/	
	Br	PBBs	BL	/	
PBDEs		/			
89	Pb		BL	/	Pass
	Cd		BL	/	
	Hg		BL	/	
	Cr	Cr(VI)	BL	/	
	Br	PBBs	BL	/	
PBDEs		/			
90	Pb		BL	/	Pass
	Cd		BL	/	
	Hg		BL	/	
	Cr	Cr(VI)	BL	/	
	Br	PBBs	/	/	
PBDEs		/			
91	Pb		BL	/	Pass
	Cd		BL	/	
	Hg		BL	/	
	Cr	Cr(VI)	BL	/	
	Br	PBBs	IN	N.D.	
PBDEs		N.D.			
92	Pb		BL	/	Pass
	Cd		BL	/	
	Hg		BL	/	
	Cr	Cr(VI)	IN	N.D.	
	Br	PBBs	/	/	
PBDEs		/			

93	Pb		BL	/	Pass
	Cd		BL	/	
	Hg		BL	/	
	Cr	Cr(VI)	BL	/	
	Br	PBBs	BL	/	
PBDEs		/			
94	Pb		BL	/	Pass
	Cd		BL	/	
	Hg		BL	/	
	Cr	Cr(VI)	BL	/	
	Br	PBBs	/	/	
PBDEs		/			
95	Pb		BL	/	Pass
	Cd		BL	/	
	Hg		BL	/	
	Cr	Cr(VI)	BL	/	
	Br	PBBs	BL	/	
PBDEs		/			
96	Pb		BL	/	Pass
	Cd		BL	/	
	Hg		BL	/	
	Cr	Cr(VI)	BL	/	
	Br	PBBs	/	/	
PBDEs		/			
97	Pb		BL	/	Pass
	Cd		BL	/	
	Hg		BL	/	
	Cr	Cr(VI)	BL	/	
	Br	PBBs	/	/	
PBDEs		/			
98	Pb		BL	/	Pass
	Cd		BL	/	
	Hg		BL	/	
	Cr	Cr(VI)	BL	/	
	Br	PBBs	/	/	
PBDEs		/			
99	Pb		BL	/	Pass
	Cd		BL	/	
	Hg		BL	/	
	Cr	Cr(VI)	BL	/	
	Br	PBBs	/	/	
PBDEs		/			

100	Pb		BL	/	Pass
	Cd		BL	/	
	Hg		BL	/	
	Cr	Cr(VI)	BL	/	
	Br	PBBs	BL	/	
		PBDEs		/	
101	Pb		BL	/	Pass
	Cd		BL	/	
	Hg		BL	/	
	Cr	Cr(VI)	BL	/	
	Br	PBBs	BL	/	
		PBDEs		/	
102	Pb		BL	/	Pass
	Cd		BL	/	
	Hg		BL	/	
	Cr	Cr(VI)	IN	N.D.	
	Br	PBBs	/	/	
		PBDEs		/	
103	Pb		BL	/	Pass
	Cd		BL	/	
	Hg		BL	/	
	Cr	Cr(VI)	BL	/	
	Br	PBBs	BL	/	
		PBDEs		/	
104	Pb		BL	/	Pass
	Cd		BL	/	
	Hg		BL	/	
	Cr	Cr(VI)	BL	/	
	Br	PBBs	BL	/	
		PBDEs		/	
105	Pb		BL	/	Pass
	Cd		BL	/	
	Hg		BL	/	
	Cr	Cr(VI)	BL	/	
	Br	PBBs	BL	/	
		PBDEs		/	
106	Pb		IN	8935 ^{#1}	Pass
	Cd		BL	/	
	Hg		BL	/	
	Cr	Cr(VI)	BL	/	
	Br	PBBs	BL	/	
		PBDEs		/	

107	Pb		BL	/	Pass
	Cd		BL	/	
	Hg		BL	/	
	Cr	Cr(VI)	BL	/	
	Br	PBBs	BL	/	
PBDEs		/			
108	Pb		BL	/	Pass
	Cd		BL	/	
	Hg		BL	/	
	Cr	Cr(VI)	BL	/	
	Br	PBBs	BL	/	
PBDEs		/			
109	Pb		BL	/	Pass
	Cd		BL	/	
	Hg		BL	/	
	Cr	Cr(VI)	BL	/	
	Br	PBBs	BL	/	
PBDEs		/			
110	Pb		BL	/	Pass
	Cd		BL	/	
	Hg		BL	/	
	Cr	Cr(VI)	BL	/	
	Br	PBBs	BL	/	
PBDEs		/			
111	Pb		BL	/	Pass
	Cd		BL	/	
	Hg		BL	/	
	Cr	Cr(VI)	BL	/	
	Br	PBBs	BL	/	
PBDEs		/			
112	Pb		BL	/	Pass
	Cd		BL	/	
	Hg		BL	/	
	Cr	Cr(VI)	BL	/	
	Br	PBBs	BL	/	
PBDEs		/			
113	Pb		BL	/	Pass
	Cd		BL	/	
	Hg		BL	/	
	Cr	Cr(VI)	BL	/	
	Br	PBBs	BL	/	
PBDEs		/			

114	Pb		BL	/	Pass
	Cd		BL	/	
	Hg		BL	/	
	Cr	Cr(VI)	BL	/	
	Br	PBBs	BL	/	
PBDEs		/			
115	Pb		BL	/	Pass
	Cd		BL	/	
	Hg		BL	/	
	Cr	Cr(VI)	BL	/	
	Br	PBBs	BL	/	
PBDEs		/			
116	Pb		BL	/	Pass
	Cd		BL	/	
	Hg		BL	/	
	Cr	Cr(VI)	BL	/	
	Br	PBBs	IN	N.D.	
PBDEs		N.D.			
117	Pb		BL	/	Pass
	Cd		BL	/	
	Hg		BL	/	
	Cr	Cr(VI)	BL	/	
	Br	PBBs	BL	/	
PBDEs		/			
118	Pb		BL	/	Pass
	Cd		BL	/	
	Hg		BL	/	
	Cr	Cr(VI)	BL	/	
	Br	PBBs	BL	/	
PBDEs		/			
119	Pb		BL	/	Pass
	Cd		BL	/	
	Hg		BL	/	
	Cr	Cr(VI)	BL	/	
	Br	PBBs	/	/	
PBDEs		/			
120	Pb		BL	/	Pass
	Cd		BL	/	
	Hg		BL	/	
	Cr	Cr(VI)	BL	/	
	Br	PBBs	/	/	
PBDEs		/			

121	Pb		BL	/	Pass
	Cd		BL	/	
	Hg		BL	/	
	Cr	Cr(VI)	BL	/	
	Br	PBBs	BL	/	
PBDEs		/			
122	Pb		BL	/	Pass
	Cd		BL	/	
	Hg		BL	/	
	Cr	Cr(VI)	BL	/	
	Br	PBBs	/	/	
PBDEs		/			
123	Pb		BL	/	Pass
	Cd		BL	/	
	Hg		BL	/	
	Cr	Cr(VI)	BL	/	
	Br	PBBs	BL	/	
PBDEs		/			
124	Pb		BL	/	Pass
	Cd		BL	/	
	Hg		BL	/	
	Cr	Cr(VI)	BL	/	
	Br	PBBs	BL	/	
PBDEs		/			
125	Pb		BL	/	Pass
	Cd		BL	/	
	Hg		BL	/	
	Cr	Cr(VI)	BL	/	
	Br	PBBs	/	/	
PBDEs		/			
126	Pb		BL	/	Pass
	Cd		BL	/	
	Hg		BL	/	
	Cr	Cr(VI)	BL	/	
	Br	PBBs	BL	/	
PBDEs		/			
127	Pb		BL	/	Pass
	Cd		BL	/	
	Hg		BL	/	
	Cr	Cr(VI)	BL	/	
	Br	PBBs	/	/	
PBDEs		/			

128	Pb		BL	/	Pass
	Cd		BL	/	
	Hg		BL	/	
	Cr	Cr(VI)	BL	/	
	Br	PBBs	BL	/	
PBDEs		/			
129	Pb		BL	/	Pass
	Cd		BL	/	
	Hg		BL	/	
	Cr	Cr(VI)	BL	/	
	Br	PBBs	/	/	
PBDEs		/			
130	Pb		BL	/	Pass
	Cd		BL	/	
	Hg		BL	/	
	Cr	Cr(VI)	BL	/	
	Br	PBBs	BL	/	
PBDEs		/			
131	Pb		BL	/	Pass
	Cd		BL	/	
	Hg		BL	/	
	Cr	Cr(VI)	IN	N.D.	
	Br	PBBs	/	/	
PBDEs		/			
132	Pb		BL	/	Pass
	Cd		BL	/	
	Hg		BL	/	
	Cr	Cr(VI)	BL	/	
	Br	PBBs	BL	/	
PBDEs		/			
133	Pb		BL	/	Pass
	Cd		BL	/	
	Hg		BL	/	
	Cr	Cr(VI)	BL	/	
	Br	PBBs	/	/	
PBDEs		/			
134	Pb		BL	/	Pass
	Cd		BL	/	
	Hg		BL	/	
	Cr	Cr(VI)	BL	/	
	Br	PBBs	IN	N.D.	
PBDEs		N.D.			

135	Pb		BL	/	Pass
	Cd		BL	/	
	Hg		BL	/	
	Cr	Cr(VI)	BL	/	
	Br	PBBs	/	/	
PBDEs		/			
136	Pb		BL	/	Pass
	Cd		BL	/	
	Hg		BL	/	
	Cr	Cr(VI)	BL	/	
	Br	PBBs	BL	/	
PBDEs		/			
137	Pb		BL	/	Pass
	Cd		BL	/	
	Hg		BL	/	
	Cr	Cr(VI)	BL	/	
	Br	PBBs	BL	/	
PBDEs		/			
138	Pb		BL	/	Pass
	Cd		BL	/	
	Hg		BL	/	
	Cr	Cr(VI)	BL	/	
	Br	PBBs	BL	/	
PBDEs		/			
139	Pb		BL	/	Pass
	Cd		BL	/	
	Hg		BL	/	
	Cr	Cr(VI)	BL	/	
	Br	PBBs	/	/	
PBDEs		/			

Bis-(2-ethylhexyl) Phthalate (DEHP), Benzyl butyl Phthalate (BBP), Dibutyl Phthalate (DBP) and Diisobutyl Phthalate(DIBP)

Test Items	Result(mg/kg)		
	1+2+11	4+5+43	6
Bis-(2-ethylhexyl) Phthalate (DEHP)	N.D.	N.D.	N.D.
Benzyl butyl Phthalate (BBP)	N.D.	N.D.	N.D.
Dibutyl Phthalate (DBP)	N.D.	N.D.	N.D.
Diisobutyl Phthalate(DIBP)	N.D.	N.D.	N.D.
Conclusion	Pass	Pass	Pass

Test Items	Result(mg/kg)		
	10	13+18+24	15+23+60
Bis-(2-ethylhexyl) Phthalate (DEHP)	N.D.	N.D.	N.D.
Benzyl butyl Phthalate (BBP)	N.D.	N.D.	N.D.
Dibutyl Phthalate (DBP)	N.D.	N.D.	N.D.
Diisobutyl Phthalate(DIBP)	N.D.	N.D.	N.D.
Conclusion	Pass	Pass	Pass

Test Items	Result(mg/kg)		
	20+21+47	27+33+41	42+44+45
Bis-(2-ethylhexyl) Phthalate (DEHP)	N.D.	N.D.	N.D.
Benzyl butyl Phthalate (BBP)	N.D.	N.D.	N.D.
Dibutyl Phthalate (DBP)	N.D.	N.D.	N.D.
Diisobutyl Phthalate(DIBP)	N.D.	N.D.	N.D.
Conclusion	Pass	Pass	Pass

Test Items	Result(mg/kg)		
	48+62+63	50+51+54	52+56
Bis-(2-ethylhexyl) Phthalate (DEHP)	N.D.	N.D.	N.D.
Benzyl butyl Phthalate (BBP)	N.D.	N.D.	N.D.
Dibutyl Phthalate (DBP)	N.D.	N.D.	N.D.
Diisobutyl Phthalate(DIBP)	N.D.	N.D.	N.D.
Conclusion	Pass	Pass	Pass

Test Items	Result(mg/kg)		
	58	64	66+67+70
Bis-(2-ethylhexyl) Phthalate (DEHP)	N.D.	N.D.	N.D.
Benzyl butyl Phthalate (BBP)	N.D.	N.D.	N.D.
Dibutyl Phthalate (DBP)	N.D.	N.D.	N.D.
Diisobutyl Phthalate(DIBP)	N.D.	N.D.	N.D.
Conclusion	Pass	Pass	Pass

Test Items	Result(mg/kg)		
	68	69+71+78	73+77+80
Bis-(2-ethylhexyl) Phthalate (DEHP)	N.D.	N.D.	N.D.
Benzyl butyl Phthalate (BBP)	N.D.	N.D.	N.D.
Dibutyl Phthalate (DBP)	N.D.	N.D.	N.D.
Diisobutyl Phthalate(DIBP)	N.D.	N.D.	N.D.
Conclusion	Pass	Pass	Pass

Test Items	Result(mg/kg)		
	83+91	86+93+95	88+89+123
Bis-(2-ethylhexyl) Phthalate (DEHP)	N.D.	N.D.	N.D.
Benzyl butyl Phthalate (BBP)	N.D.	N.D.	N.D.
Dibutyl Phthalate (DBP)	N.D.	N.D.	N.D.
Diisobutyl Phthalate(DIBP)	N.D.	N.D.	N.D.
Conclusion	Pass	Pass	Pass

Test Items	Result(mg/kg)		
	100+101+108	109+110+112	111
Bis-(2-ethylhexyl) Phthalate (DEHP)	N.D.	N.D.	N.D.
Benzyl butyl Phthalate (BBP)	N.D.	N.D.	N.D.
Dibutyl Phthalate (DBP)	N.D.	N.D.	N.D.
Diisobutyl Phthalate(DIBP)	N.D.	N.D.	N.D.
Conclusion	Pass	Pass	Pass

Test Items	Result(mg/kg)		
	113	114+115+121	116+134
Bis-(2-ethylhexyl) Phthalate (DEHP)	N.D.	N.D.	N.D.
Benzyl butyl Phthalate (BBP)	N.D.	N.D.	N.D.
Dibutyl Phthalate (DBP)	N.D.	N.D.	N.D.
Diisobutyl Phthalate(DIBP)	N.D.	N.D.	N.D.
Conclusion	Pass	Pass	Pass

Test Items	Result(mg/kg)		
	124+136+137	126+130	128+132
Bis-(2-ethylhexyl) Phthalate (DEHP)	N.D.	N.D.	N.D.
Benzyl butyl Phthalate (BBP)	N.D.	N.D.	N.D.
Dibutyl Phthalate (DBP)	N.D.	N.D.	N.D.
Diisobutyl Phthalate(DIBP)	N.D.	N.D.	N.D.
Conclusion	Pass	Pass	Pass

Test Items	Result(mg/kg)
	138
Bis-(2-ethylhexyl) Phthalate (DEHP)	N.D.
Benzyl butyl Phthalate (BBP)	N.D.
Dibutyl Phthalate (DBP)	N.D.
Diisobutyl Phthalate(DIBP)	N.D.
Conclusion	Pass

- Note:
- 1.N.D. = Not Detected (<MDL)
MDL = Method Detection Limit
1mg/kg = 1ppm =0.0001%
/=Not Regulated or Not Applicable
 2. BL = Below the XRF screening limit
IN = Further chemical test will be conducted when the screening result inconclusive
OL = Further chemical test will be conducted while the result is above the screening limit.
 3. For metal samples, the sample is negative for Cr(VI), if the Cr(VI) concentration is less than 0.10 µg/cm², the coating is considered a non- Cr(VI) based coating;
The sample is positive for Cr(VI), if the Cr(VI) concentration is greater than 0.13 µg/cm²,
The sample coating is considered to contain Cr(VI);
The result is considered to be inconclusive, the Cr(VI) concentration is between the 0.10 µg/cm² and 0.13 µg/cm², unavoidable coating variations may influence the determination.
Because the storage condition and production date of the sample are not known, the test results of the sample of hexavalent chromium can only represent the state of hexavalent chromium in the samples tested.
- Remark:
1. When conducting the test for PBBs&PBDEs, XRF was introduced to screen Br Exclusively; When conducting the test for Hexavalent Chromium, XRF was introduced to screen Chromium exclusively.
 2. According to the client's statement , the material of the sample(s) comply with RoHS directive 2011/65/EU Annex III Exemption, Corresponding exemption clause:
#1 7(c)-I Lead is exempted as Electrical and electronic components containing lead in a glass or ceramic other than dielectric ceramic in capacitors, e.g. piezo-electronic devices, or in a glass or ceramic matrix compound.
 3. Sample No.66~139 Resubmitted Date: Jul. 23, 2025.
Sample No.84 Resubmitted Date: Aug. 20, 2025.

Test Method:

1. With reference to IEC 62321-1: 2013 Ed.1.0, IEC 62321-2:2021 Ed.2.0, IEC 62321-3-1:2013 Ed.1.0. XRF screening limits in mg/kg for regulated elements in various matrices.

Element	Limit of IEC 62321-3-1:2013 Ed.1.0 (mg/kg)		
	Polymers	Metals	Composite material
Pb	$BL \leq (700-3\sigma) < X$ $< (1300+3\sigma) \leq OL$	$BL \leq (700-3\sigma) < X$ $< (1300+3\sigma) \leq OL$	$BL \leq (500-3\sigma) < X$ $< (1500+3\sigma) \leq OL$
Cd	$BL \leq (70-3\sigma) < X <$ $(130+3\sigma) \leq OL$	$BL \leq (70-3\sigma) < X <$ $(130+3\sigma) \leq OL$	$LOD < X < (150+3\sigma)$ $\leq OL$
Hg	$BL \leq (700-3\sigma) < X$ $< (1300+3\sigma) \leq OL$	$BL \leq (700-3\sigma) < X$ $< (1300+3\sigma) \leq OL$	$BL \leq (500-3\sigma) < X$ $< (1500+3\sigma) \leq OL$
Cr	$BL \leq (700-3\sigma) < X$	$BL \leq (700-3\sigma) < X$	$BL \leq (500-3\sigma) < X$
Br	$BL \leq (300-3\sigma) < X$	/	$BL \leq (250-3\sigma) < X$

Note: BL= Below the XRF screening limit
 OL=Over the XRF screening limit
 X=The symbol "X" marks the region where further investigation is necessary.
 3σ =The reproducibility of analytical instruments
 LOD= Detection limit

2. Chemical Test

Test item	Test method	Test instrument	MDL	Limit [△]
Lead (Pb)	IEC 62321-5:2013 Ed.1.0	ICP-OES	2 mg/kg	1000 mg/kg
Cadmium (Cd)	IEC 62321-5:2013 Ed.1.0	ICP-OES	2 mg/kg	100 mg/kg
Mercury (Hg)	IEC 62321-4:2013+AMD1:2017	ICP-OES	2 mg/kg	1000 mg/kg
Hexavalent Chromium(Cr(VI))	IEC 62321-7-1:2015 Ed.1.0	UV-Vis	0.10 µg/cm ²	1000 mg/kg
	IEC 62321-7-2:2017 Ed.1.0		8 mg/kg	
Polybrominated Biphenyls(PBBs)	IEC 62321-6:2015 Ed.1.0	GC-MS	5 mg/kg	1000 mg/kg
Polybrominated, Diphenyl Ethers(PBDEs)	IEC 62321-6:2015 Ed.1.0	GC-MS	5 mg/kg	1000 mg/kg
Bis-(2-ethylhexyl) Phthalate (DEHP)	IEC 62321-8:2017 Ed.1.0	GC-MS	30 mg/kg	1000 mg/kg
Benzyl butyl Phthalate (BBP)	IEC 62321-8:2017 Ed.1.0	GC-MS	30 mg/kg	1000 mg/kg
Dibutyl Phthalate (DBP)	IEC 62321-8:2017 Ed.1.0	GC-MS	30 mg/kg	1000 mg/kg
Diisobutyl Phthalate (DIBP)	IEC 62321-8:2017 Ed.1.0	GC-MS	30 mg/kg	1000 mg/kg

[△]The limit is quoted from RoHS Directive (EU) 2015/863 amending Annex II to Directive 2011/65/EU.

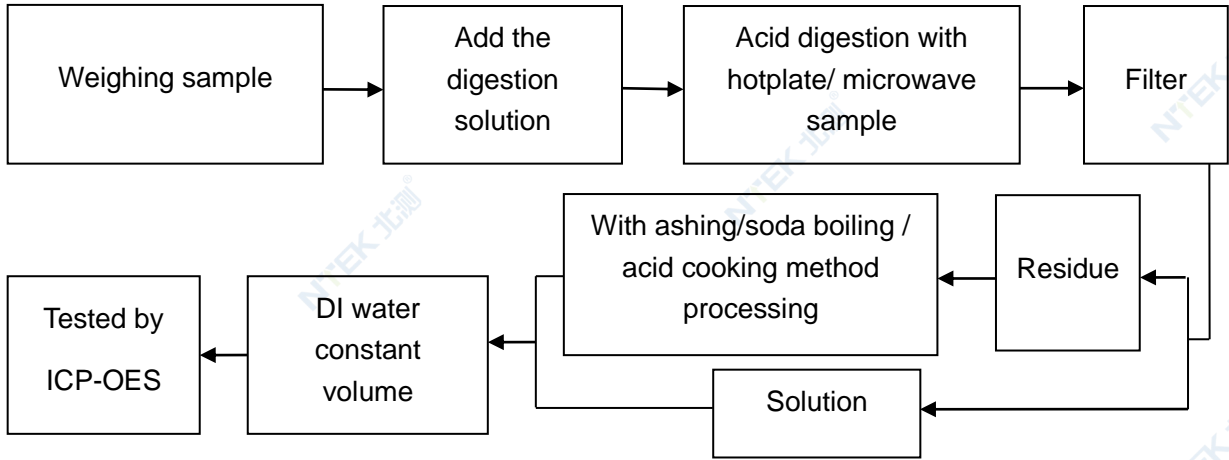
Test instrument:

Test instrument	Instrument number	Instrument model	Calibration effective date
EDXRF	LCS-005-C	EDX 1800E	2026-05-05
EDXRF	LCS-299-C	EDX-LE Plus	2026-03-27
EDXRF	LRS-116-C	EDX-1800E	2026-03-27
GC-MS	LCS-007-C	QP-2010	2026-04-29
GC-MS	LCS-008-C	QP-2010	2026-10-24
ICP-OES	LCS-343-C	ICAP PRO X	2026-04-29
UV-vis	LCS-158-C	T6 New century	2026-06-03
Analytical balance	LCS-165-C	LE84E/02	2026-02-19
Analytical balance	LCS-418-C	LAB 214 e	2026-03-27
Analytical balance	LCS-319-C	ESJ210-4B	2026-03-27

Test Flow:

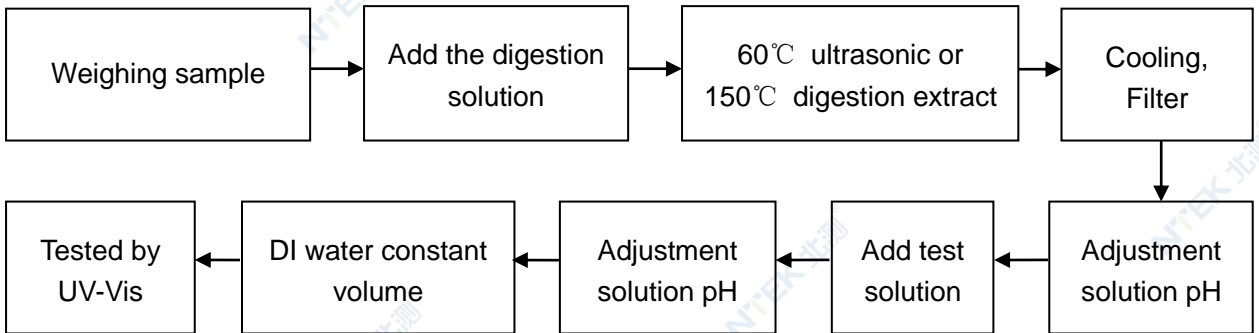
1. Lead(Pb), Cadmium(Cd) , Mercury (Hg)

The sample is completely digested according to the procedure described below

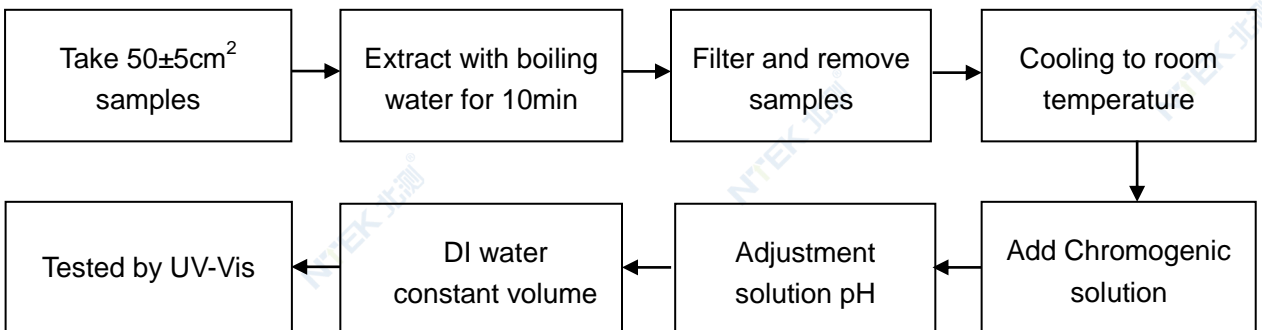


2. Hexavalent Chromium(Cr(VI))

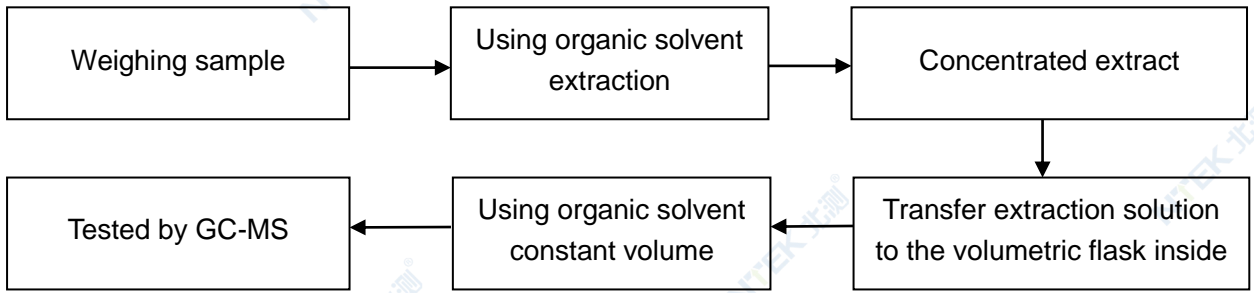
2.1 Non- metal sample(s)



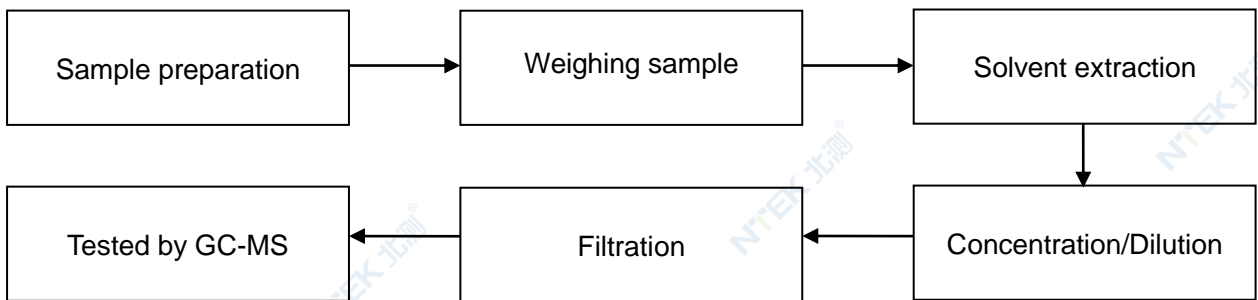
2.2 Metal sample(s)



3. PBBs/ PBDEs



4. Phthalates



Sample photo(s):



Fig.1(Finished photo)



Fig.2(Finished photo)



Fig.3(Finished photo)



Fig.4(Finished photo)



Fig.5



Fig.6

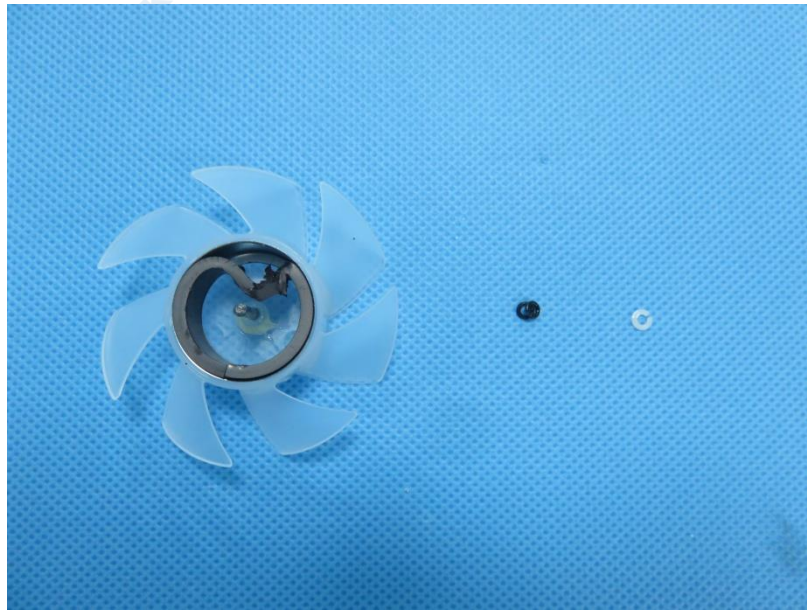


Fig.7

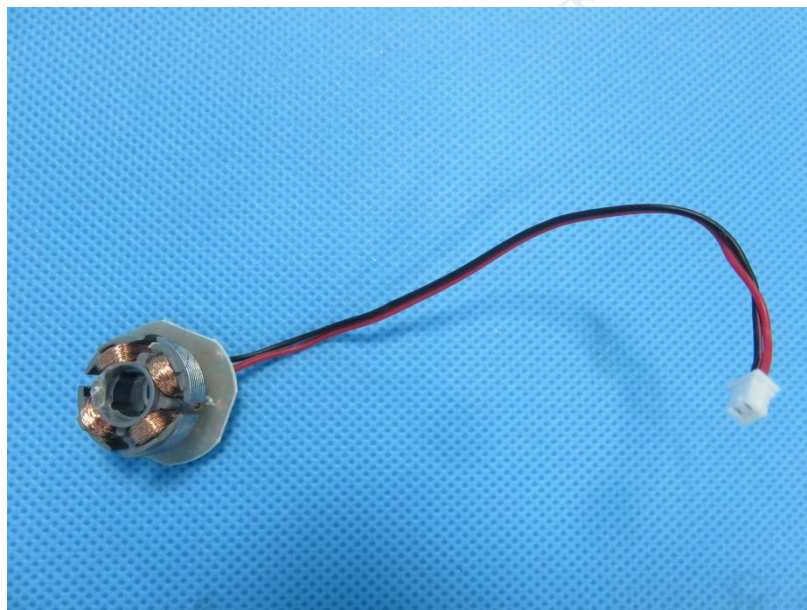


Fig.8

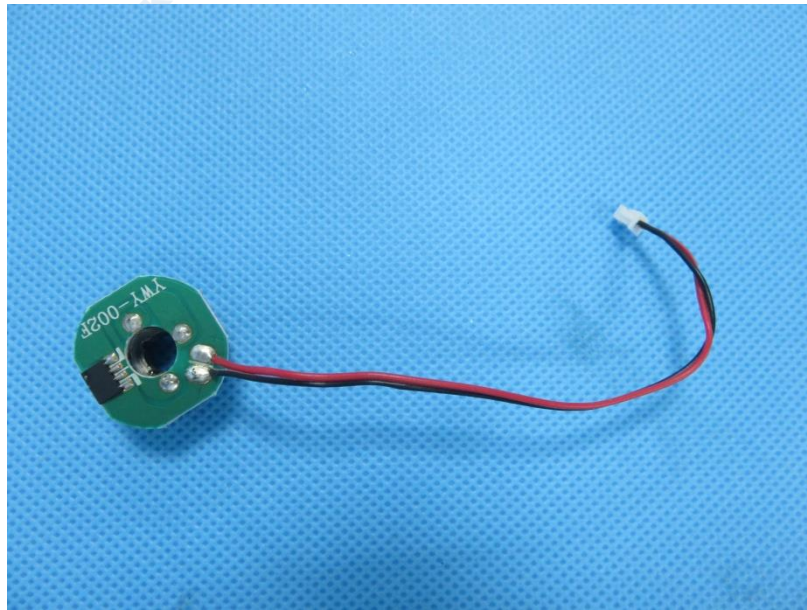


Fig.9



Fig.10



Fig.11

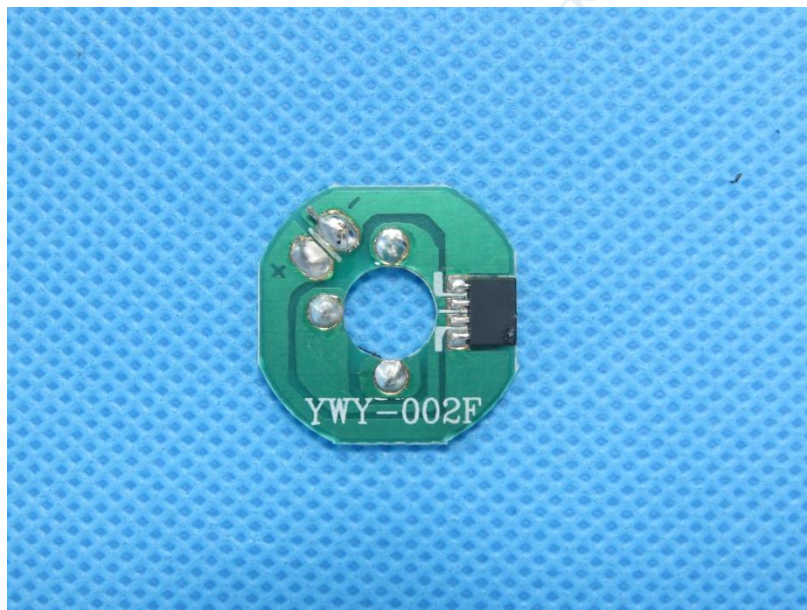


Fig.12

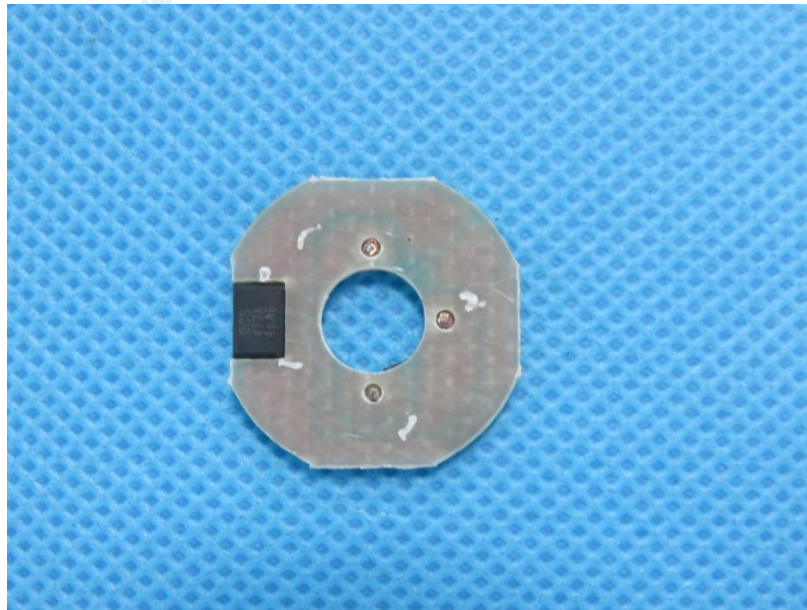


Fig.13

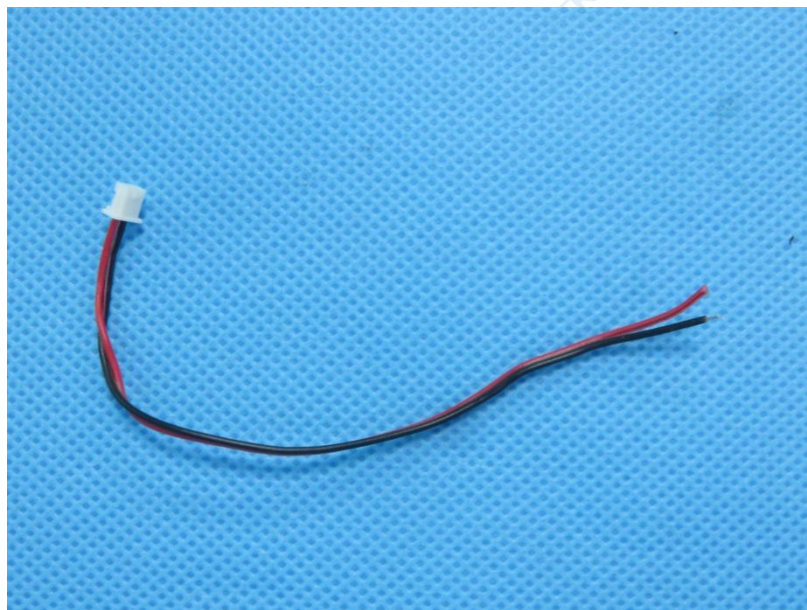


Fig.14

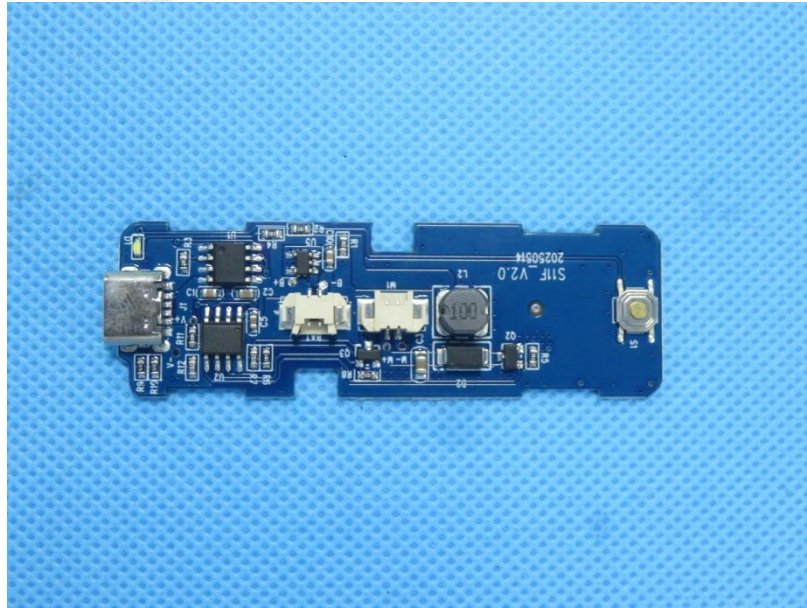


Fig.15



Fig.16

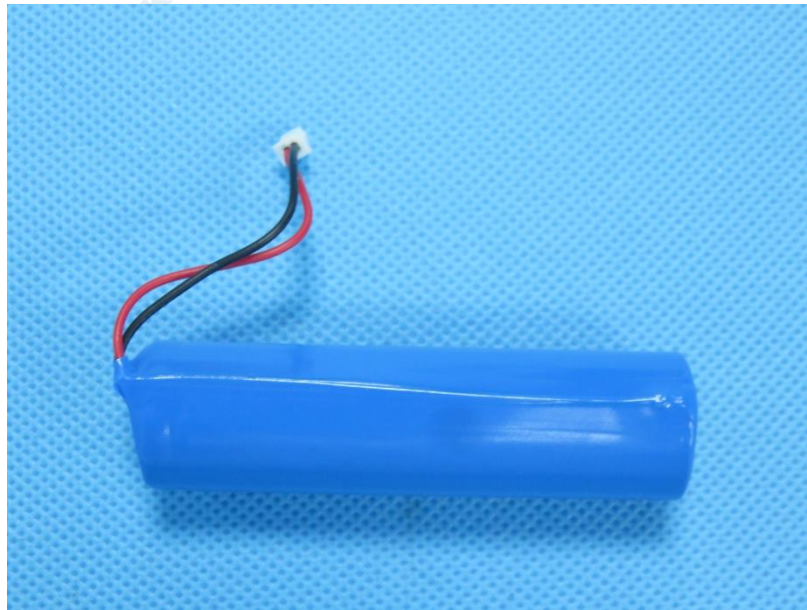


Fig.17



Fig.18

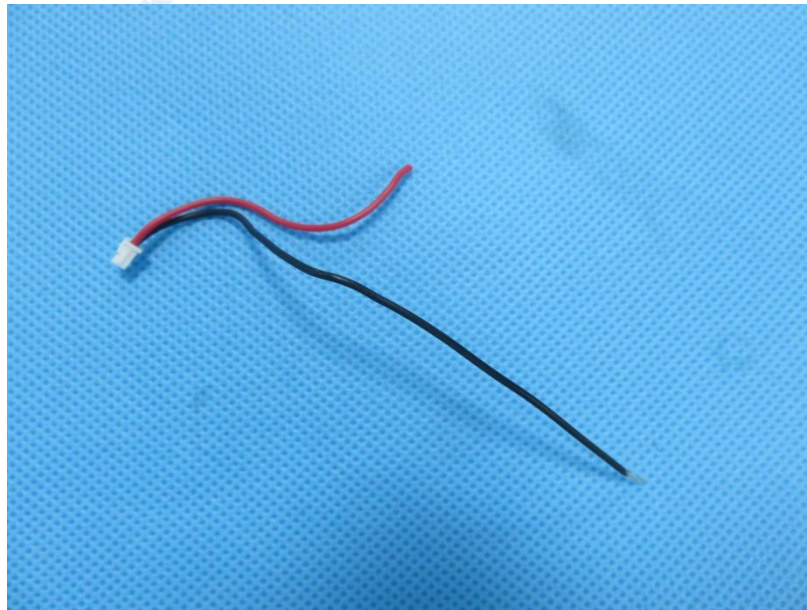


Fig.19



Fig.20



Fig.21



Fig.22

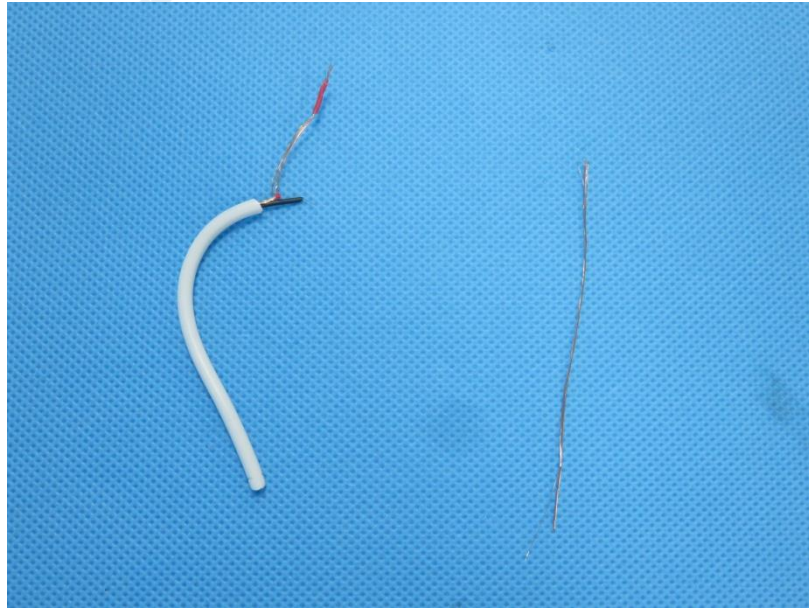


Fig.23



Fig.24



Fig.25

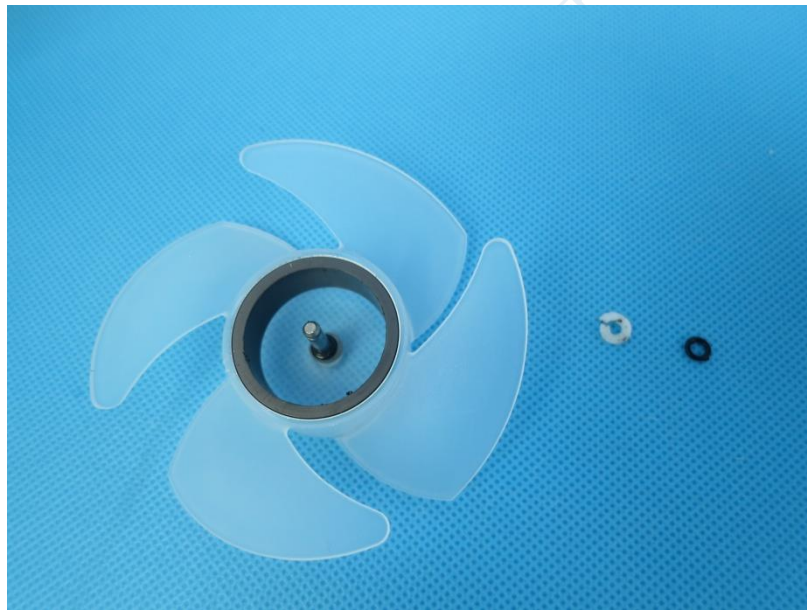


Fig.26

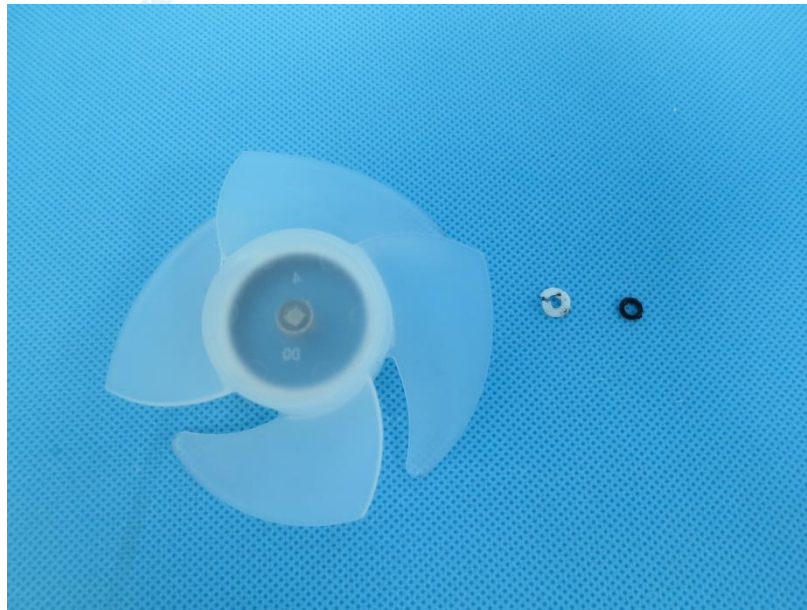


Fig.27

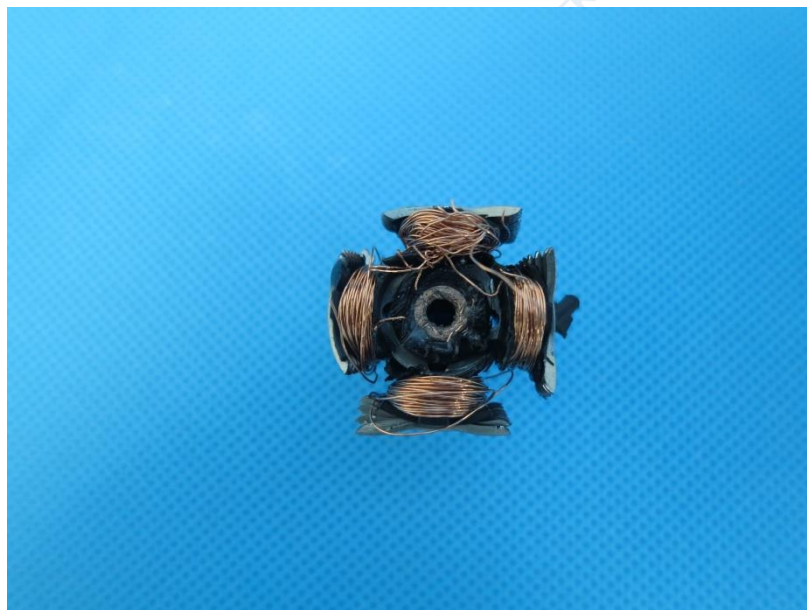


Fig.28



Fig.29

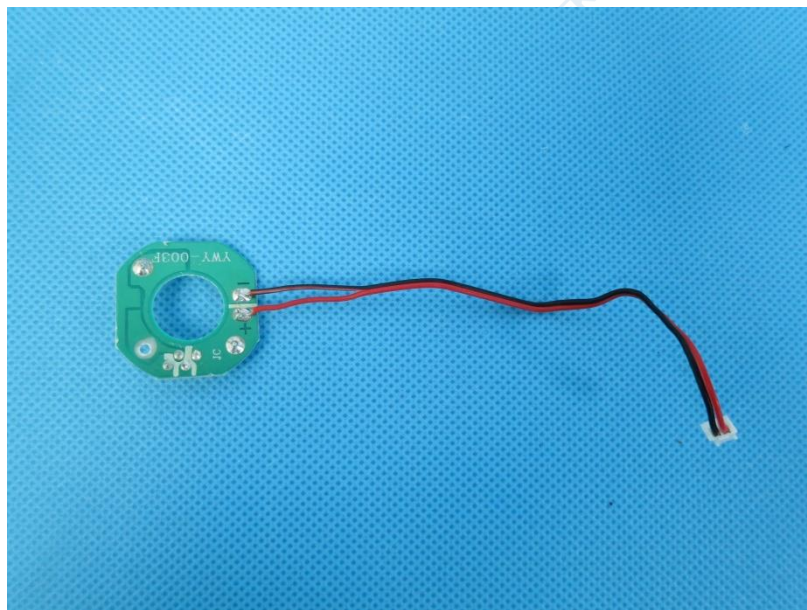


Fig.30

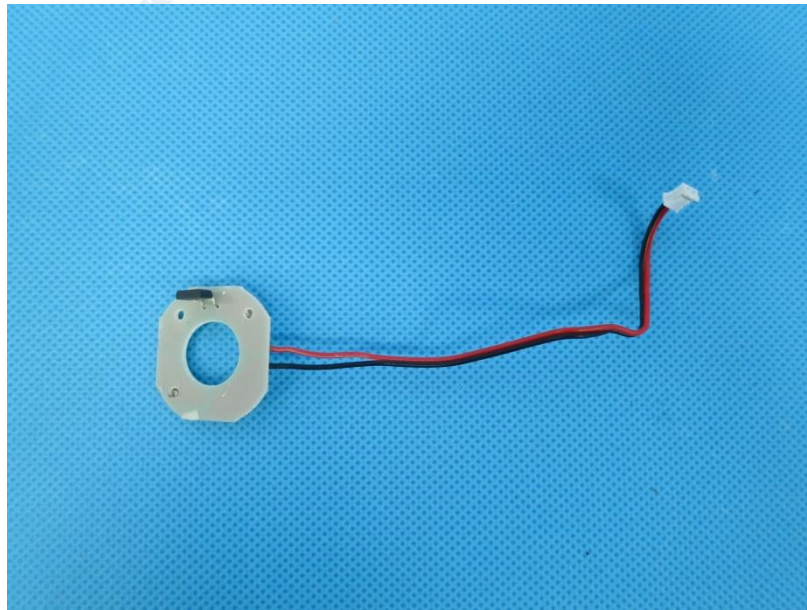


Fig.31



Fig.32



Fig.33



Fig.34



Fig.35



Fig.36



Fig.37

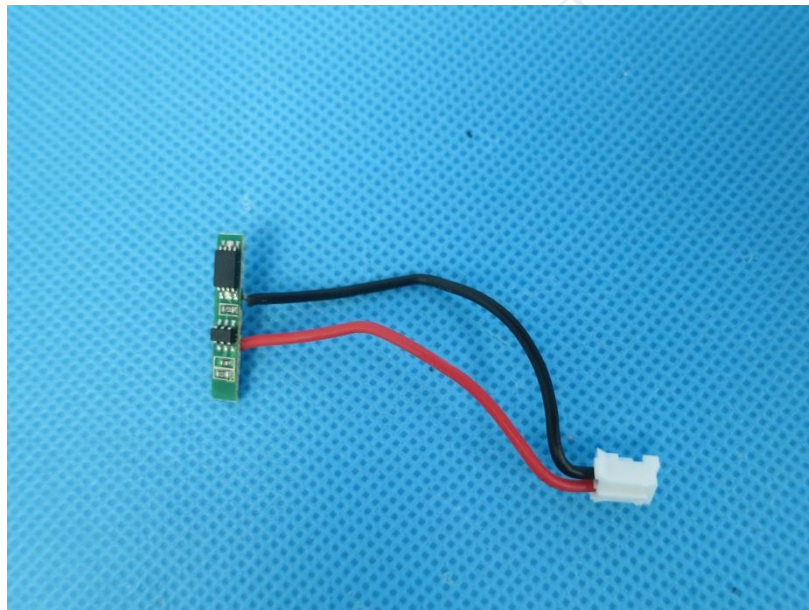


Fig.38

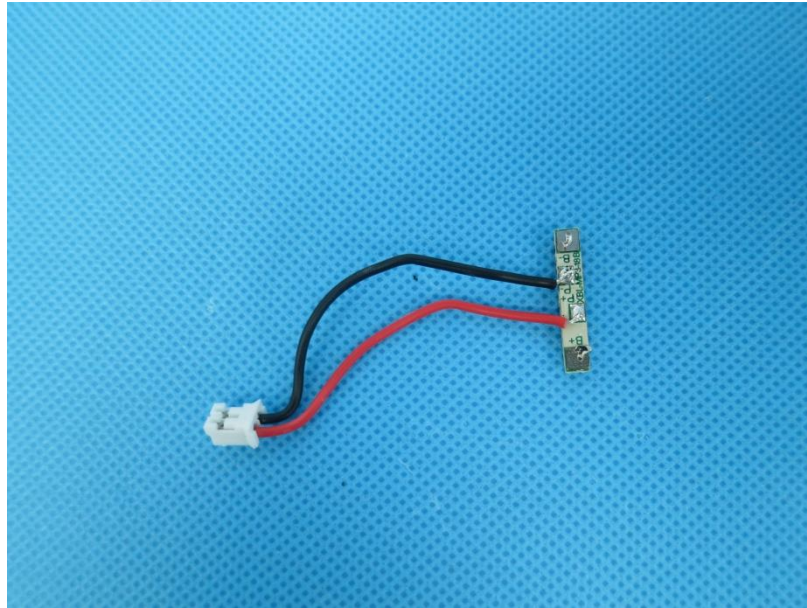


Fig.39



Fig.40

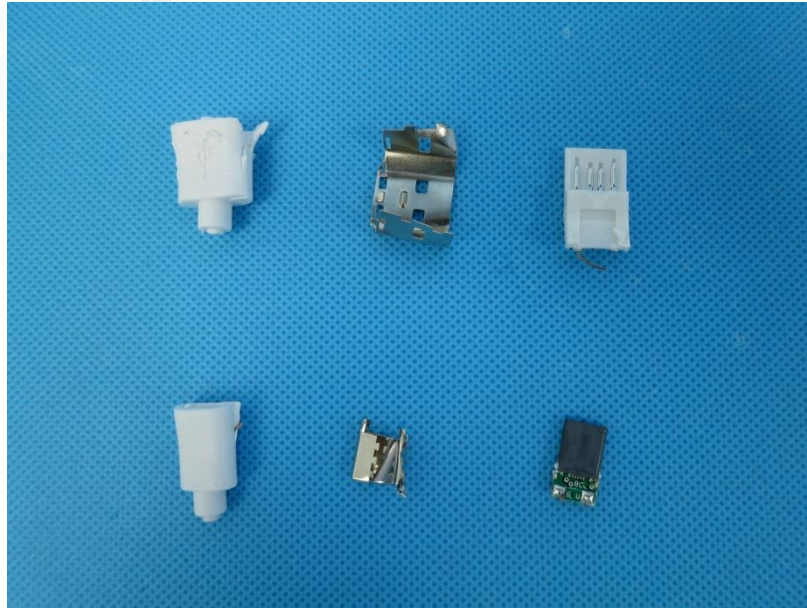


Fig.41

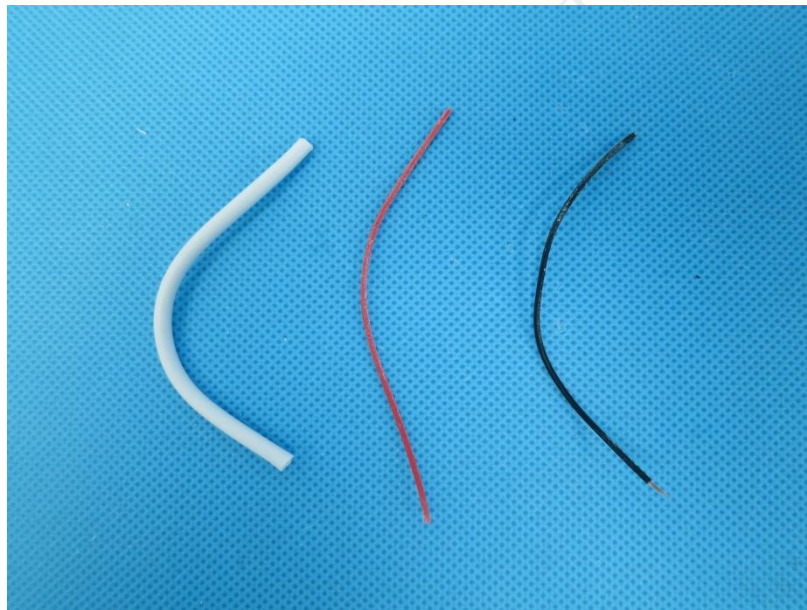


Fig.42

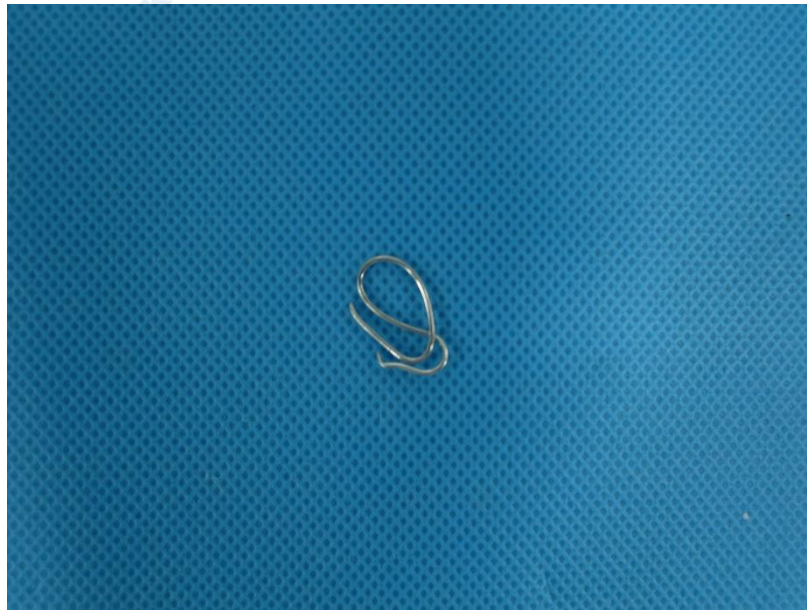


Fig.43(No.84)

****End of Report****

The test results or data in this report will be used only for education, scientific research, enterprise product development and internal quality control or other purposes.

The test report is effective only with both signature and specialized stamp, The result(s) shown in this report refer only to the sample(s) tested. Without written approval of NTEK, this report can't be reproduced except in full.